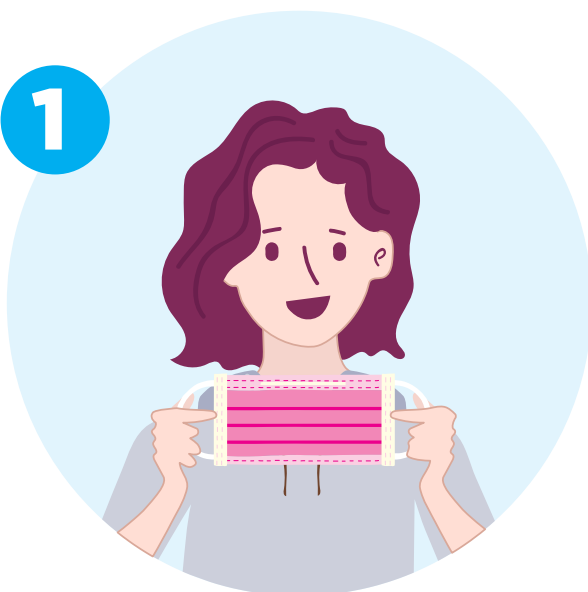




HOW TO WEAR A HOMEMADE MASK

1



Put the mask on
the right way up,
with the top of the
mask sitting on the
nose.

2



Make sure the
mask covers your
nose and mouth
completely.

3



Tie the cords
together at the
back of your head
or loop them
around your ears.
Make sure the
edges of the mask
are flat against
your face.

4



If the mask has a
metal wire over the
nose, use two fingers
to flatten it so that
the mask moulds to
the shape of your
nose.

If your mask has a
replaceable filter,
then replace it
every time you use
the mask.



TARBIJAKAITSE JA
TEHNILISE JÄRELEVALVE
AMET